

Iodine Quantification Accuracy in Dual Source Dual Energy CT Using Default Parameters vs. Patient-Specific Calibrations

**Sabrina Dorn^{1,2}, Stefan Sawall^{1,2}, Joscha Maier^{1,2},
and Marc Kachelrieß^{1,2}**

¹German Cancer Research Center (DKFZ), Heidelberg, Germany

²University of Heidelberg, Germany

DECT-based Material Decomposition

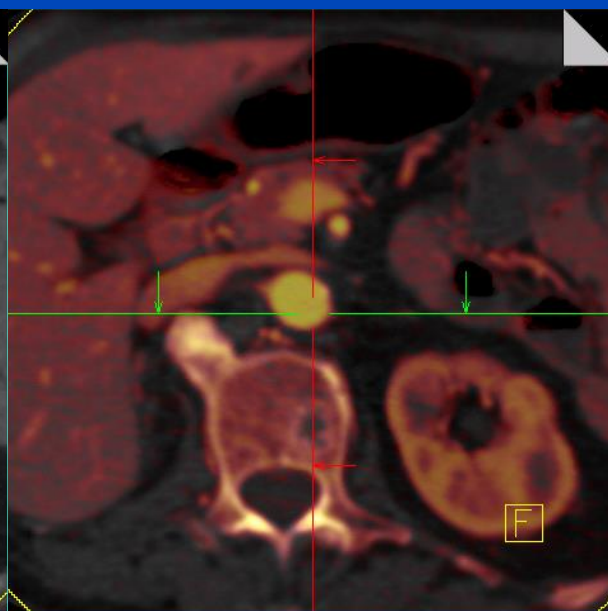
- **Detection, visualization and quantification of iodine**
 - Computation of a „virtual“ unenhanced image and an iodine image
 - Visualization and quantification of the local iodine uptake in tissue as a measure of the local blood supply



Standard image



Virtual unenhanced image



Iodine image

The screenshot displays the Siemens CT Dual Energy software interface. The main window shows three axial CT scans of the abdomen. A 'Mixing Ratio' dialog box is overlaid on the scans, showing 'CT' and 'Overlay' both set to 50%. On the left, there is a 'CT Dual Energy' control panel with settings for 'Abdomen (CA)', 'Body Bone Removal', and 'Liver VNC'. Below this is a 'Findings Navigator' table.

Name	Value	Source
CT	50%	50%

The 'Algorithm Parameters' panel is open, with 'Material Definitions' selected. It shows the following settings:

Parameter	Low Energy [HU]	High Energy [HU]
Tissue	60	55
Fat	-110	-87
Rel. CM	3.01	

The 'Rel. CM' parameter is highlighted with a yellow circle. A checked box for 'Iodine BHC' is visible at the bottom of the panel.

- Calibration required because the spectral behavior depends on the patient size in image-based DECT.
- Basically, RelCM evaluates the ratio or the difference of CT numbers.
- The relative contrast media ratio (RelCM) is calibrated by default.

Material Mixtures

- Two water-iodine mixtures of unknown mixing ratio

$$CT_1(E) = (1 - w_1)CT_W(E) + w_1CT_I(E) = w_1CT_I(E)$$

$$CT_2(E) = (1 - w_2)CT_W(E) + w_2CT_I(E) = w_2CT_I(E)$$

- Their relative contrast is independent of the mixing ratio

$$\frac{CT_1(E_{80 \text{ kV}}) - CT_2(E_{80 \text{ kV}})}{CT_1(E_{140 \text{ kV}}) - CT_2(E_{140 \text{ kV}})} = \frac{CT_I(E_{80 \text{ kV}})}{CT_I(E_{140 \text{ kV}})}$$

- Hence, it can be used to calibrate DECT.



Aim

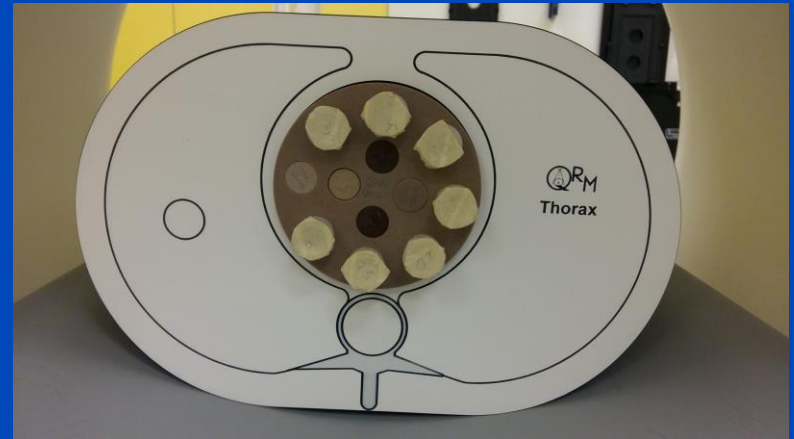
To evaluate the influence of the calibration of the relative contrast media ratio (RelCM) on iodine quantification accuracy in dual source dual energy CT (DS-DECT).

Calibration can be done either using default parameters or patient-specific evaluations.

Materials & Methods

Phantoms

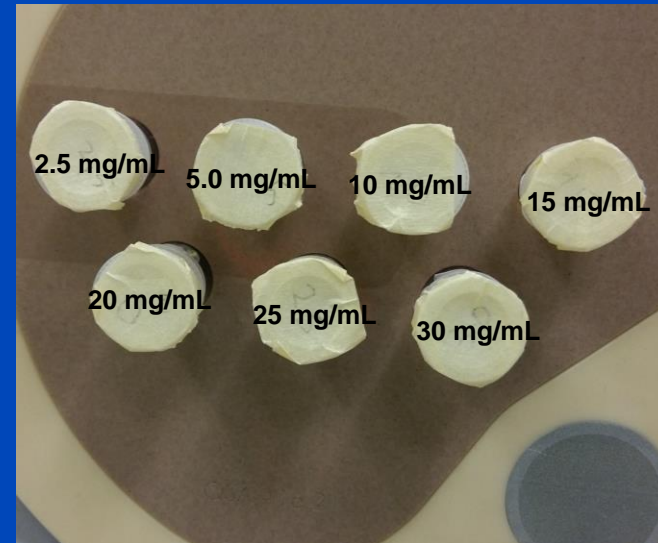
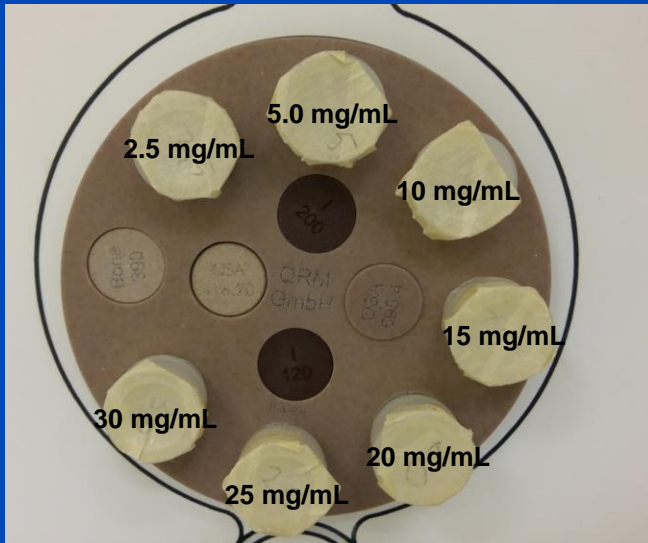
- Anthropomorphic thorax and liver phantom
- Three different phantom sizes
 - Small (200 × 300 mm)
 - Medium (250 × 350 mm)
 - Large (300 × 400 mm)



Materials & Methods

Phantoms

- Vials filled with varying iodine concentration ranging from 2.5 to 30 mg/mL

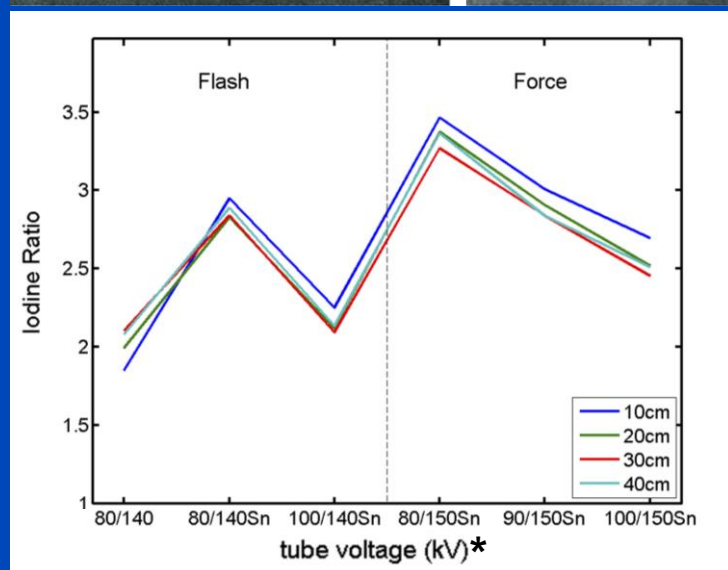
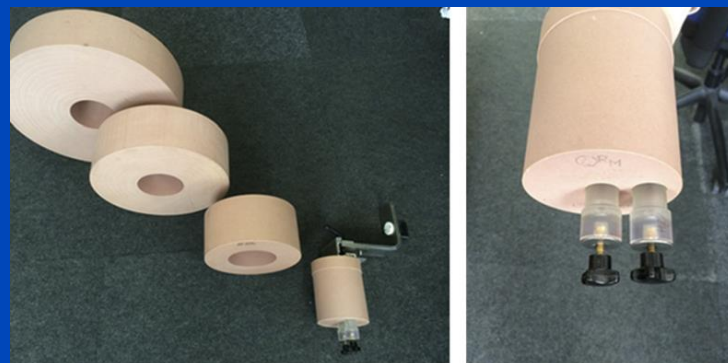


- Dual source dual energy acquisition (SOMATOM Definition Flash, Siemens Healthineers AG, Erlangen, Germany)
 - 80 kV (low energy) and 140 kV (high energy) with additional 0.4 mm tin prefiltration

Materials & Methods

ReICM Calibration

- **Default calibration**
 - ReICM calibration based on measurements
 - For each tube voltage combination, one ReICM value is preset by default
 - ReICM is a measure of spectral separation



Tube voltage combination	ReICM
80 kV / 140 kV + 0.4 mm Sn	3.01
100 kV / 140 kV + 0.4 mm Sn	2.24
70 kV / 150 kV + 0.6 mm Sn	4.13
80 kV / 150 kV + 0.6 mm Sn	3.46
90 kV / 150 kV + 0.6 mm Sn	3.01
100 kV / 150 kV + 0.6 mm Sn	2.64

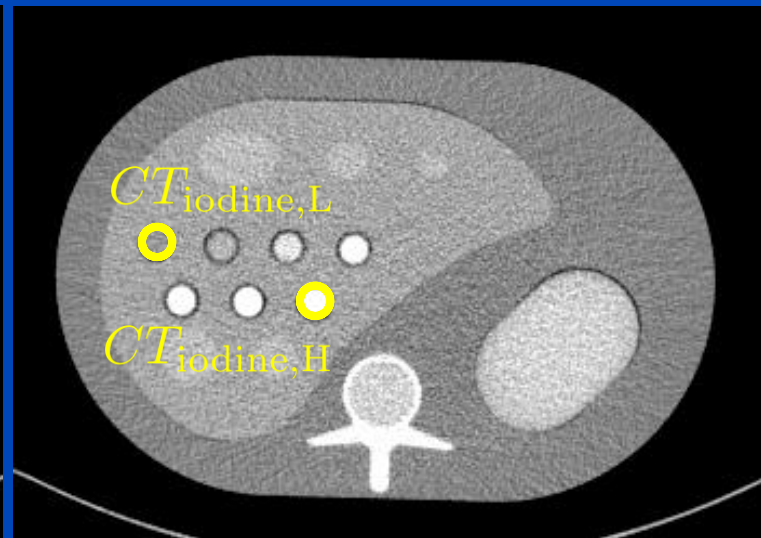
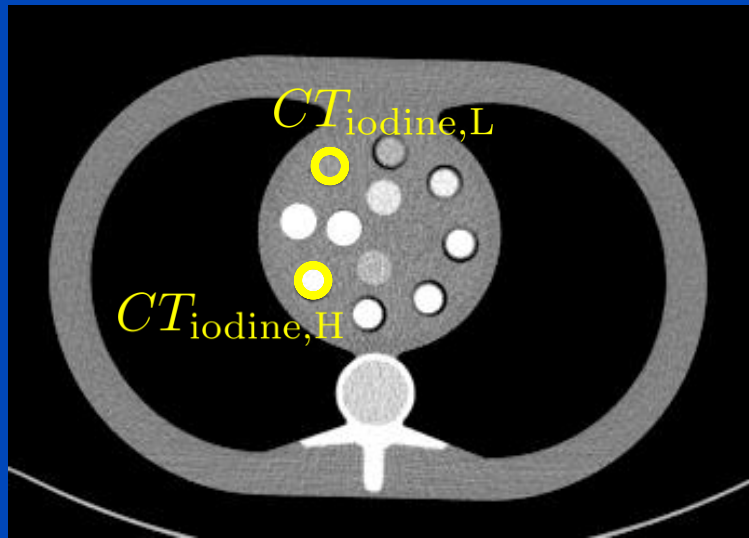
Materials & Methods

RelCM Calibration

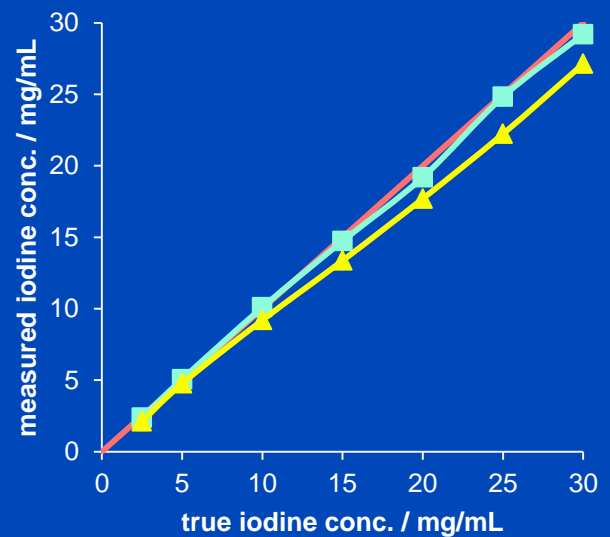
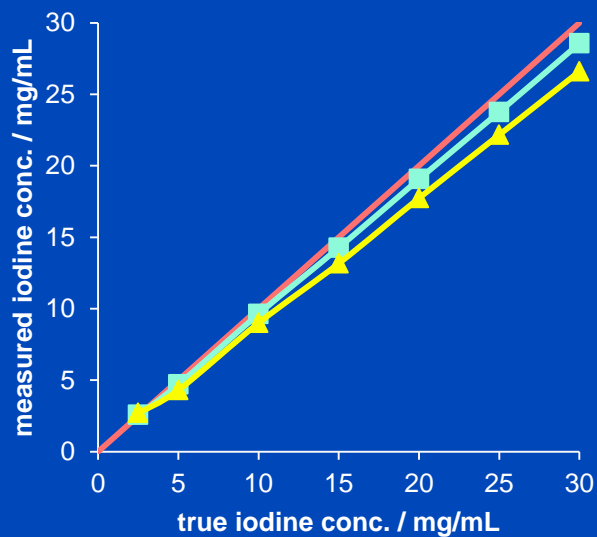
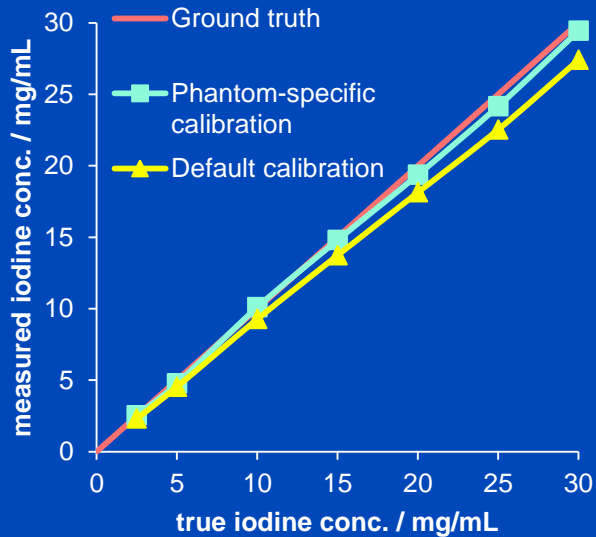
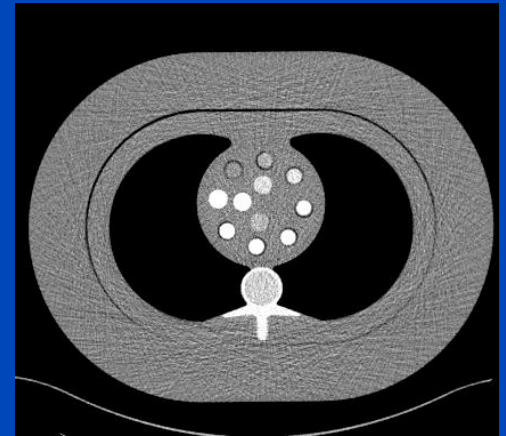
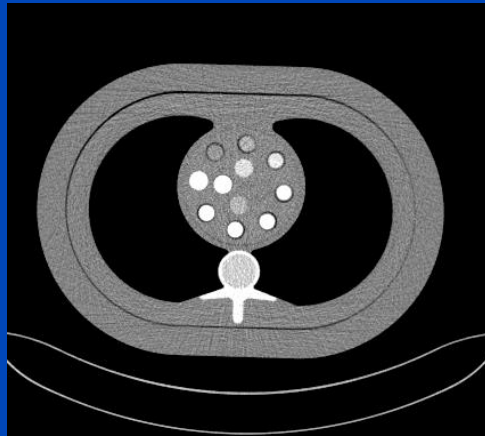
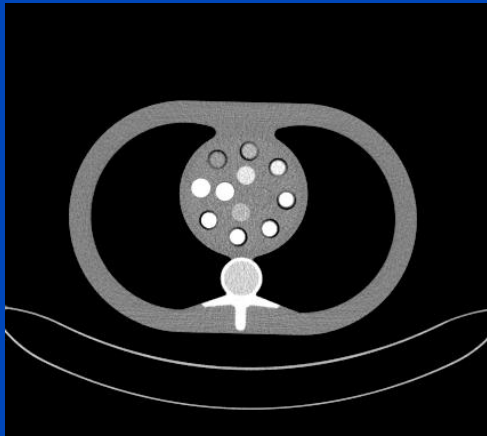
- Patient-specific calibration

- Evaluation of ROI containing lowest possible iodine concentration and ROI containing highest possible concentration
- The ratio of the iodine contrast at low and high energy determines the relative contrast media ratio

$$\text{RelCM} = \frac{CT_{\text{iodine,H}}(E_{80 \text{ kV}}) - CT_{\text{iodine,L}}(E_{80 \text{ kV}})}{CT_{\text{iodine,H}}(E_{140 \text{ kV}}) - CT_{\text{iodine,L}}(E_{140 \text{ kV}})}$$

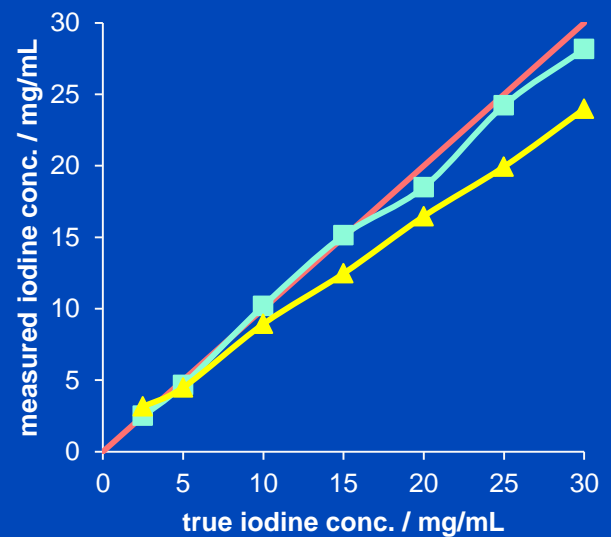
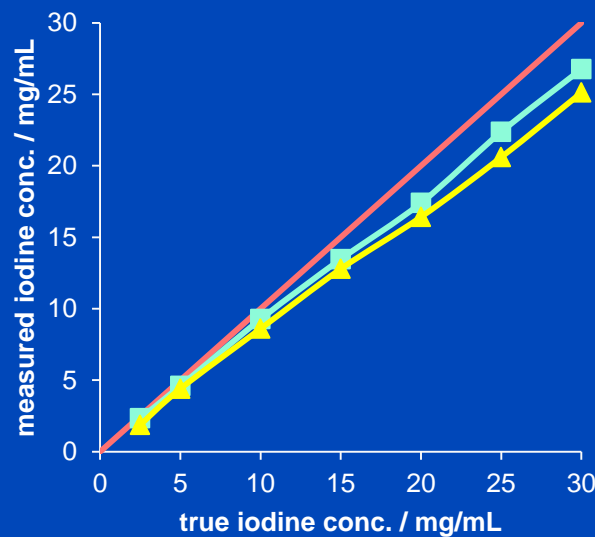
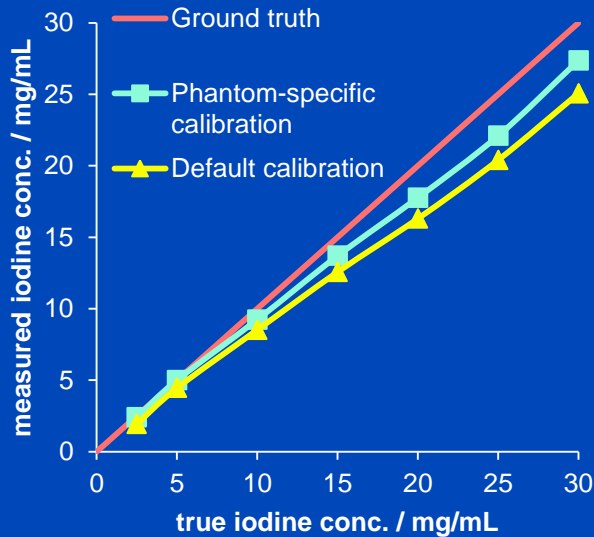
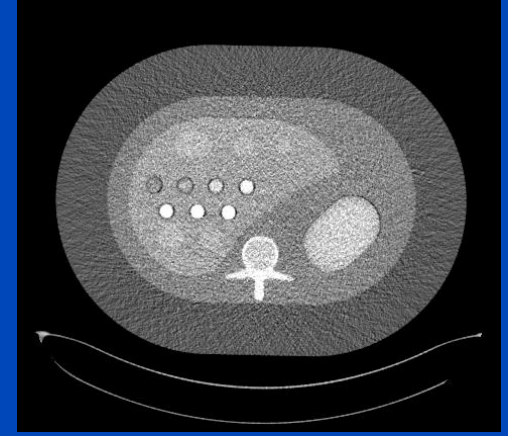
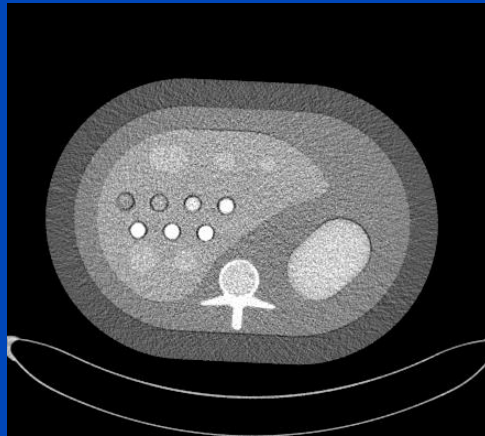
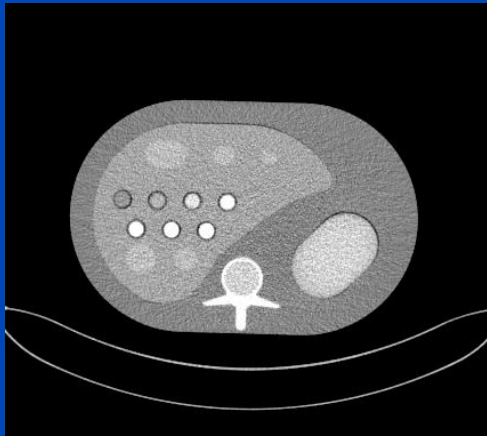


Iodine Quantification Accuracy



→ Material decomposition and iodine quantification is performed using Syngo.CT Dual Energy (Siemens Healthineers AG, Erlangen, Germany)

Iodine Quantification Accuracy



→ Material decomposition and iodine quantification is performed using Syngo.CT Dual Energy (Siemens Healthineers AG, Erlangen, Germany)

Results

Influence of Patient-specific Calibration on Relative Contrast Ratio

	Liver Phantom		Thorax Phantom	
	RelICM	Reduction	RelICM	Reduction
Default	3.01	0.0 %	3.01	0.0 %
Small	2.86	5.0 %	2.80	7.0 %
Medium	2.91	3.3 %	2.81	6.7 %
Large	2.67	11.3 %	2.76	8.3 %
	Mean	6.5 %	Mean	7.3 %

- Phantom-specific calibrations result in lower RelICM values.

Results

Quantitative Evaluation of Iodine Quantification Accuracy

- Accuracy improvement factor

$$AIF = \frac{\epsilon_{\text{default}} - \epsilon_{\text{patient}}}{\epsilon_{\text{default}}}$$

	Liver Phantom			Thorax Phantom		
	Mean relative error		AIF	Mean relative error		AIF
	$\epsilon_{\text{default}}$	ϵ_{PS}		$\epsilon_{\text{default}}$	ϵ_{PS}	
Small	16.9 %	7.4 %	56.3 %	8.7 %	2.4 %	72.9 %
Medium	16.8 %	9.9 %	41.4 %	11.2 %	4.5 %	59.6 %
Large	13.7 %	7.6 %	44.8 %	10.2 %	2.4 %	76.6 %
		Mean	47.5 %		Mean	69.7 %

Conclusions

- **Default parameter is a trade-off between iodine quantification accuracy and degrading effects.**
- **Phantom-specific calibrations result in lower RelCM values but better and more accurate iodine concentrations, since it accounts for beam hardening, scatter and actual object size.**
- **Patient-specific calibration on patient data can improve iodine quantification accuracy in clinical routine.**

Thank You!



The 6th International Conference on Image Formation in X-Ray Computed Tomography

August 3 - August 7 • 2020 • Regensburg • Germany • www.ct-meeting.org



© Bild Regensburg Tourismus GmbH

Conference Chair: **Marc Kachelrieß**, German Cancer Research Center (DKFZ), Heidelberg, Germany

This presentation will soon be available at www.dkfz.de/ct.
Job opportunities through DKFZ's international Fellowship programs (marc.kachelriess@dkfz.de).
Parts of the reconstruction software were provided by RayConStruct® GmbH, Nürnberg, Germany.